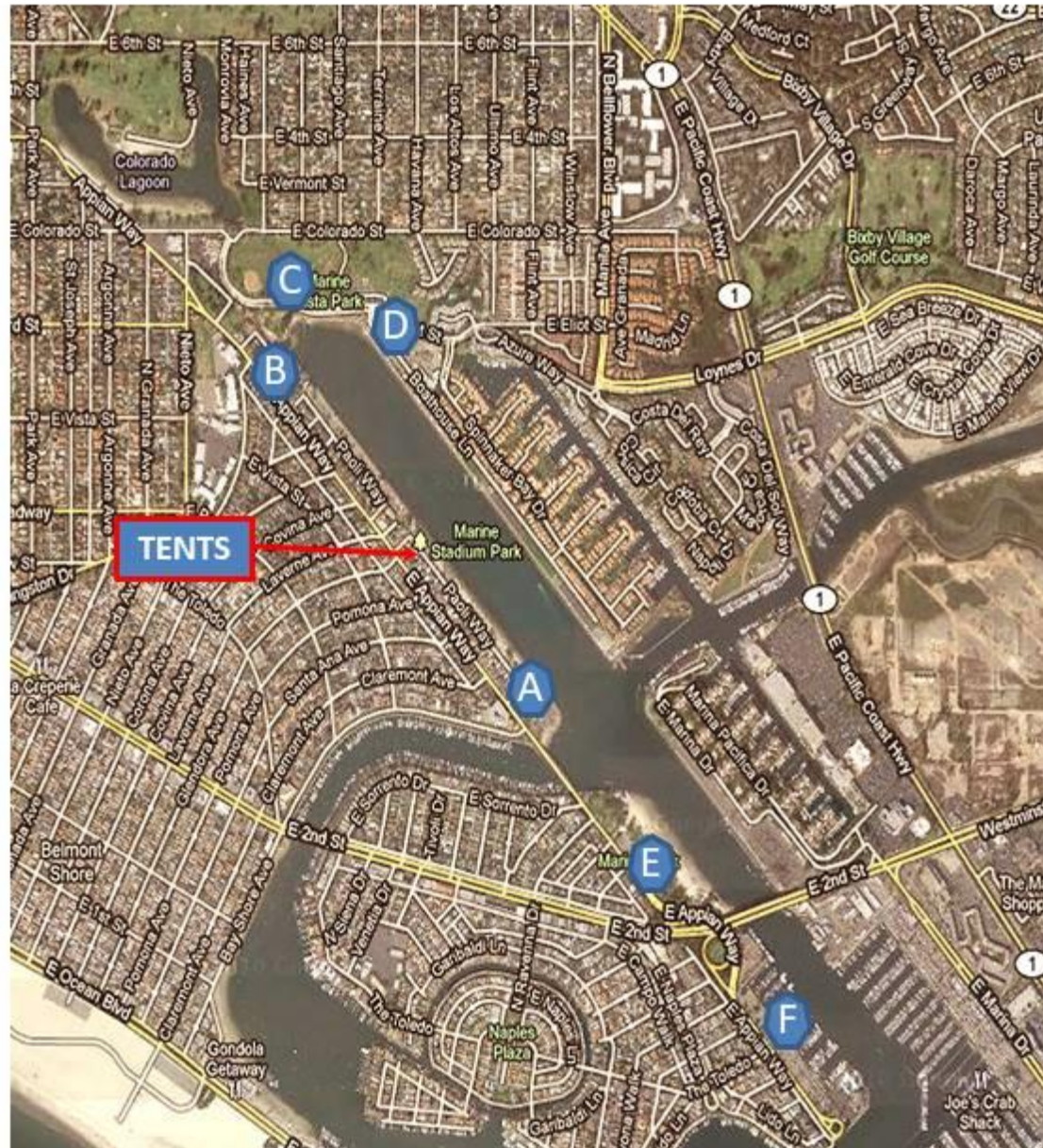


2024 Long Beach Dragon Boat Festival Public Parking



- A** MARINE STADIUM SOUTH PARKING (120 SPOTS)
VIP PARKING ONLY – **MUST BE ON VIP LIST OR HAVE PARKING ACCESS CODE**
- B** MARINE STADIUM NORTH PARKING (220 SPOTS) – **MUST HAVE PARKING ACCESS CODE**
- C** **DETOURS/CONSTRUCTION HERE** - CURBSIDE PARKING – ELIOT ST. (100 SPOTS)
MARINE VISTA PARK – (60 SPOTS)
- D** **DETOURS/CONSTRUCTION HERE**
BOATHOUSE LANE PARKING (80 SPOTS) – Enter from Eliot St. & E. Marina Dr. which turns into Boathouse Lane
- E** MOTHER'S BEACH METERED PARKING (100 SPOTS) - \$.25/15 MINUTES **FROM 8A-6P**
You may also pay for parking here via the [PASSPORT](https://passportparking.com) (passportparking.com) parking app – Mother's Beach is **ZONE 9371**.
- F** ALAMITOS BASIN FOUR PARKING (400 SPOTS) – Adjacent to the Long Beach Yacht Club